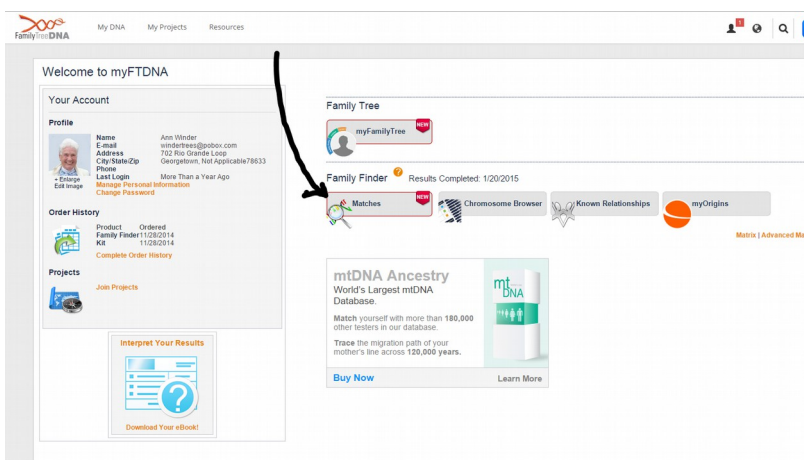


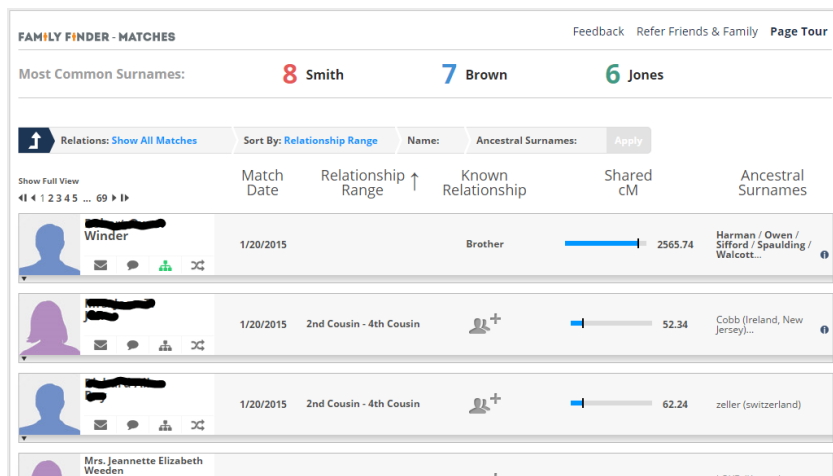
FAMILY FINDER MATCHES ON FTDNA

Created March 2015

After your Family Finder sample has been processed, you will begin to have “matches” with others who have tested with FTDNA. This list increases as others submit samples, so it is important to check the list periodically. When you find a match, it is up to you to decide if the match is an individual who belongs on your family tree or not. Usually, this means starting an email conversation with that individual. First, go to your webpage and look at your matches.



Log on to your FTDNA page at www.familytreedna.com/login.aspx using your kit# and password. Click on Family Finder Matches



There are 6 columns, which are described below. The columns are sortable simply by clicking on the header of the column you want to sort.

You can limit the list by clicking on **Relations** and specifying which filter you would like to use.

Name

This is the name of the individual who matches your DNA in some way. There is information about that individual with small clickable icons

- Character card
 - Click on the pink or blue silhouette or photo to access the profile of the individual. This should be the name of the person who was tested and any other information they have entered such as email, haplogroups, most distant ancestors, ancestral surnames, etc.
- Email address
- Notes
 - These are notes to yourself concerning this individual, such as date you emailed them, possible relationship, etc. Don't forget to click on **Save**.
 - The icon is green if you have entered a note

- Pedigree
 - If the individual has entered a Family Tree, this icon is green and clickable; otherwise it is gray. If it is green, you can click on the icon to go look at the individual's Family Tree, where you can search for recognizable members.
- In Common With
 - Click on this common to see matches that you and this individual both have in common.


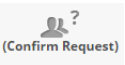
Match Date

- The default presentation of the list is by longest matching cM's (explained below)
- To see what matches have come in recently, click on Match Date to bring the most recent to the top.

Relationship Range

- This is FTDNA's estimate at how close you may be related to this individual. This is a very broad estimate and requires investigation by yourself to determine the true relationship, if any, by corresponding with the individual.

Known Relationship

- If you can determine a true relationship, record it here by clicking on the gray icon  and selecting the appropriate relationship. The icon will then be labeled as “pending”, waiting for the individual to confirm the relationship. The icon will remain as pending until the individual agrees that this is a true relationship.
- If the individual has suggested a relationship with you, the icon is displayed as  “Confirm Request”. If you can confirm the relationship, click on the icon and select that relationship on the pull down menu.

Shared cM

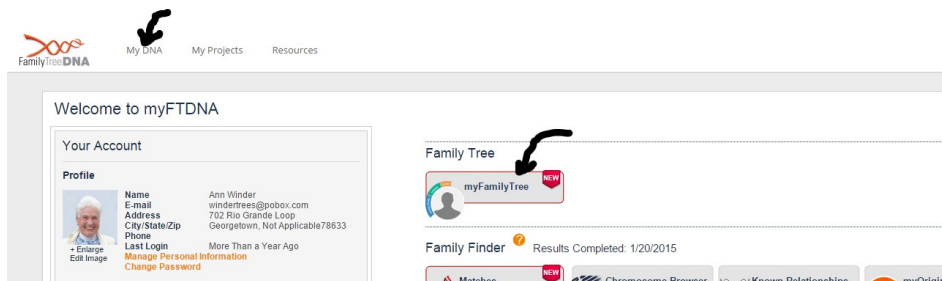
- This is the size of the combined DNA segments you have in common with the individual. The larger the segment, the more likely you have common ancestors. See documents on **Chromosome Browser**, **GEDMatch**, and **DNAGedcom** to learn how to interpret shared cMs.

Ancestral Surnames

- These are the names the individual has entered on his FTDNA web pages. If the column is blank, the individual has not entered any names, so you have no hints about your possible relationship. If there are names, and some of the names are bolded, those are names you have in common. This does not mean there is a match, but that you should look at the individual's Family Tree to see if you have common ancestors. Use the search box on their Family Tree to look up the names.

As you can see, the more information you enter on your web pages, the more information others have to determine whether there is a relationship. It is best to investigate first those matches who have taken the time to enter information and are therefore more likely to help you determine the relationship, if any.

Keep a list of those matches that seem promising. You will use this list with various analysis tools such as the FTDNA **Matrix** (described below), **Chromosome Browser** (described below), **GEDMatch.com**, and **DNAGedcom.com**.



As you determine relationships with other individuals in the FTDNA database, you should update your Family Tree to reflect that. Click on MyDNA to return to your home page.

Click on myFamilyTree to return to your tree.



If a pink link icon appears on the bottom left of your tree page, you have at least one entry on the tree that matches someone else's entry on their tree. Click on the icon to see a list of those individuals that match someone else's tree.

Family Finder Matrix

- Click on **MyDNA**, select submenu item **Family Finder**, and further select submenu item **Matrix**.

FAMILY FINDER - MATRIX BETA Feedback Refer Friends & Family

The **Family Finder Matrix** page allows you to select up to 10 people and compare their Family Finder relationships in a grid (matrix).

The page defaults to two lists:

- Matches: These are Family Finder matches who can be added to the grid.
- Selected Matches: These are Family Finder matches who are currently included in the grid.

Add matches to the matrix by clicking a name or names on the Matches list and then clicking the Add button. Remove matches from the matrix by clicking a name or names in the Selected Matches list and then clicking the Remove button. The grid displays under the list as you begin to add matches to the Selected Matches list. The grid shows those who share a genetic relationship according to Family Finder results with a white check mark on a blue background. When two matches do not match each other, the grid shows a blank white square.

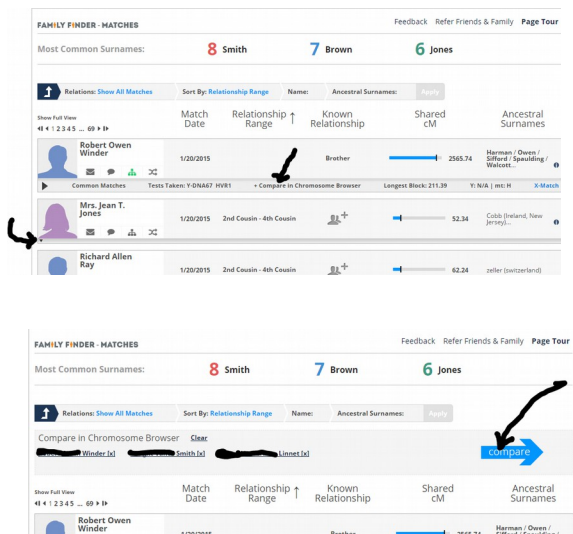
Matrix Matches	Winder	Smith	Linnet
Winder		✓	✓
Smith	✓		
Linnet	✓		

✓ - This person is identified as a match.

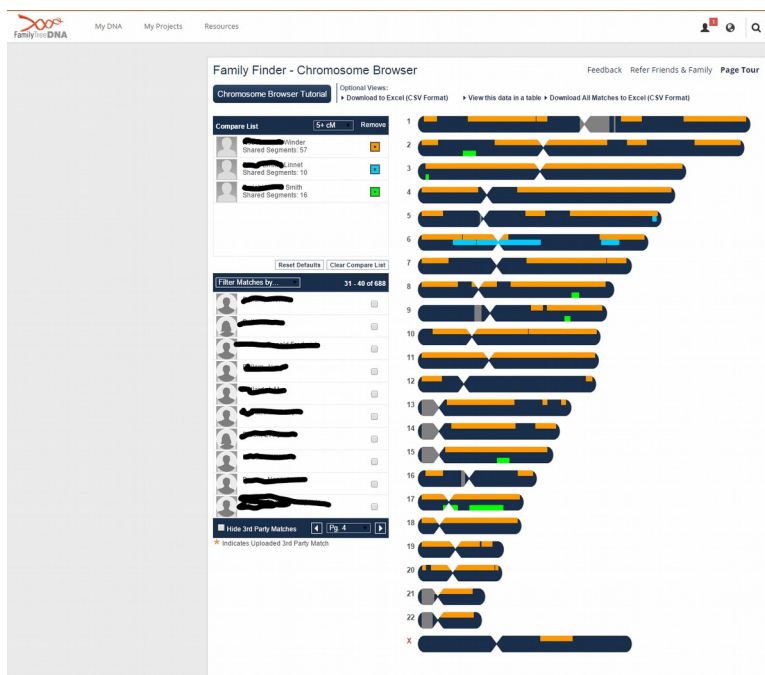
- One by one, select individuals you have singled out for further analysis from the **Matches** column and **Add** them to **Selected Matches**
- As you add individuals, FTDNA builds a matrix, showing which of these individuals have matches with the others. In this case, all three of the individuals match me (because they are on my Match list) and each other. These individuals appear to all have common ancestors.

As you discover possible relationships, and decide to contact those individuals by email, be sure to mention 1) the name of the person you match, 2) the name of the person you tested. Many people administer more than one person's test, so it is important to be specific about who is matching whom.

Chromosome Browser



- Click on MyDNA to get to your home page.
- Click on Family Finder Matches
- Click on the small arrow at the bottom of profile icon to expand the choices for each individual you have decided to investigate
- Click on **Compare in Chromosome Browser** for each individual
- Note that FTDNA creates a list of chosen individuals at the top of the screen.
- Click on the Compare button



- Each bar on the right represents one of the 23 chromosomes each of us has.
- The grayed out portions of the bars represent areas of the chromosome not analyzed by FTDNA
- The bar itself, colored in black, represents me.
- The individuals I have chosen to compare are shown with their assigned colors.
- We are looking for places where individuals stack up one over the other.
- The orange bar is my brother, so there is a lot of overlap with me
- Lennet and Smith do not overlap anywhere, so we conclude they

probably don't have a common ancestor.

- Smith and Winder do stack up noticeably on chromosome 17, so we suggest they have an ancestor in common with each other as well as with me
- Linnet and Winder also stack up noticeably on chromosome 6, so we suggest they have an ancestor in common as well as with me.

These are only hints to lead you to further research with the individuals that look promising by email, and/or by further research for documentation.